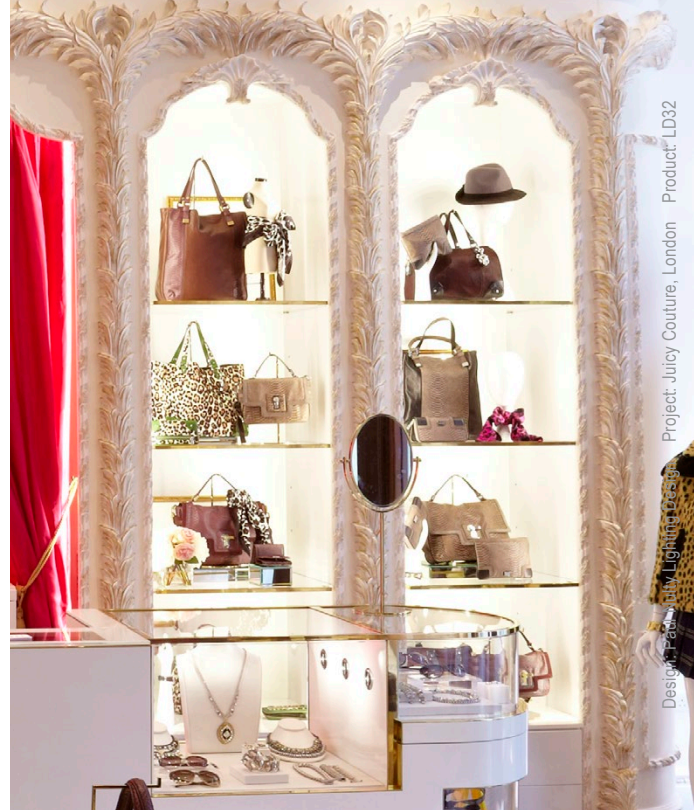


# LD32

High Power Linear Reflector LED System



Data sheet - Page 1

Project: Juicy Couture, London Product: LD32  
Design: Pedestal Lighting Design

Designed specifically for under shelf lighting, the high CRI LEDs are mounted at 30° and integrated around a broad beam 102° reflector. When surface mounted at the front edge of the shelf the entire area will be illuminated.

## Key Features

- Low glare with the LEDs set back into the profile within the broad beam reflector
- Illuminates entire shelf area
- By mounting the LEDs within a linear reflector, the light is focused to where it is needed with no loss of output from just using the LED itself
- Clear cover is supplied as standard. A frosted diffuser can be specified, creating a softer light effect which can be useful in tight details
- LED spacings of 50mm and 75mm are available, allowing cost savings with fewer double space LEDs and drivers whilst still achieving the desired effect
- Lengths are custom made to suit to a maximum of 2.1 metres, with LED spacing maintained between lengths, so no dark spots!
- Available with Switched, 0-10V, DMX, Dali or Mains dimming drivers



## Specification

### Applications



### Beam Angles

82°

### LED type

Cree XPG

### Colour temperature

2700K\*\* / 3000K

5000K

### Drive Current (mA)

350

500

350

500

### LED power\* (W)

1.2W

1.7W

1.2W

1.7W

### CRI (typical)

93

93

75

75

### Forward voltage (V)<sub>100</sub>

3.0V

3.2V

3.0V

3.2V

### LED spacing

Delivered lm/m\*\* (L<sub>100</sub>)

### 50mm

2052

2800

2493

3402

### 75mm

1334

1820

1620

2211

### 100mm

1026

1400

1247

1701

### Lumens per circuit watt\*\*\*

86

82

104

100

### LED lifetime (to 70% lumen maintenance)

50,000hrs at a max ambient temperature of 35°C

### Materials

Silver anodised aluminium body, Acrylic cover

### Wiring

Comes pre-wired with 2m lead, can be specified with up to 10m at extra cost

### IP rating

IP40

\*LED wattage includes losses associated with using an 85% efficient driver

\*\* 2700K lumen output is 12% lower than the 3000K figure listed

4000K lumen output is 14% higher than the 4000K figure listed (80 CRI)

\*\*\*Data shown allows for 50mm spacing

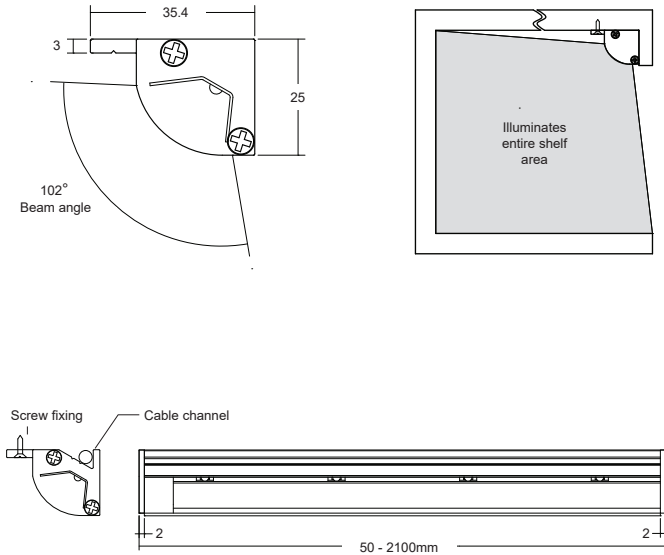
# LD32

High Power Linear Reflector LED System



Data sheet - Page 2

## Dimensions



## Order Codes and Options

Product code	LED colour	LED spacing	Cover	Length
LD32 - 350 - 500	<input type="text"/>	<input type="text"/>	<input type="text"/>	<input type="text"/>

Example: LD32-500 / LW30 / 50 / CC / 1200mm

### Product codes with output options

1.2W LED at 350mA	LD32-350
1.7W LED at 500mA	LD32-500

### LED colour options

LED colour options	Suffix
Extra Warm White (2700K)	/LW27
Warm White (3000K)	/LW30
White (4000K) - on request	/LW40
Cool White (5000K)	/LW50

### LED spacing

50mm	/50
75mm	/75

### Cover option

Clear cover	/CC
Frosted cover	/FD
Opal cover	/OD

### Use with 350mA and 500mA constant current LED drivers

We have a wide range of dimmable LED drivers, 0-10V, DMX, DALI and Mains dimmable. Please see the downloads section on our website.